

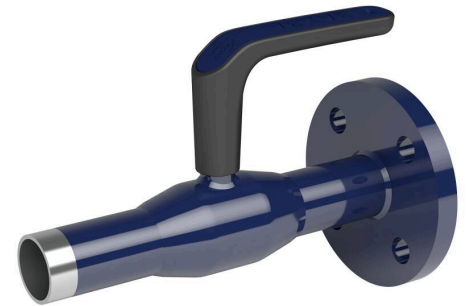
# X-steel ball valves, reduced bore

105X series, X-series, flange / welding, EN (DIN), DN 15-50, reduced bore



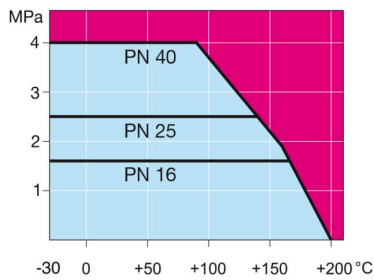
**KÄHLER**  
Industrie-Armaturen

Body	DN 15-50 Steel, P235GH (1.0345)
Ball	DN 15-50 Stainless steel, X5CrNi18-10 (1.4301)
Ball seal	DN 15-50 PTFE+C
Stem	DN 15-50 Stainless steel, X8CrNiS18-9 (1.4305)
Stem seal	DN 15-50 FPM
Operation	DN 15-50 with composite handle
Flanges	EN 1092-1 Available PN 10, 16, 25, 40

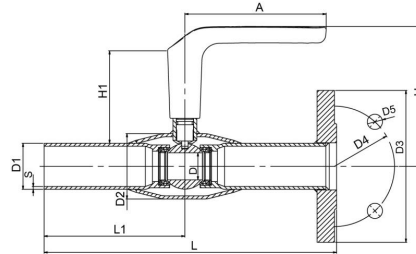


## Operation conditions

-20 ° – +200 °C  
Below -20 °C contact manufacturer  
Lowest allowed ambient temperature -40 °C  
Leakage rate A (EN 12266-1)



DN 10-50



DN	PN	Product no.	A	D	D1	D2	D3	D4	D5	H	H1	L	L1	S	kg
15	40	105015X	130	10	21.3	33.7	95.0	65.0	14.0	119	86	240	115	2	1.2
20	40	105020X	130	15	26.9	42.4	105.0	75.0	14.0	123	87	240	115	2.3	1.7
25	40	105025X	130	20	33.7	48.3	115.0	85.0	14.0	125	86	240	115	2.6	1.9
32	40	105032X	130	25	42.4	60.3	140.0	100.0	18.0	129	85	270	130	2.6	3.0
40	40	105040X	130	32	48.3	70.0	150.0	110.0	18.0	133	87	270	130	2.6	3.4
50	40	105050X	130	40	60.3	76.1	165.0	125.0	18.0	140	88	310	150	2.9	4.5