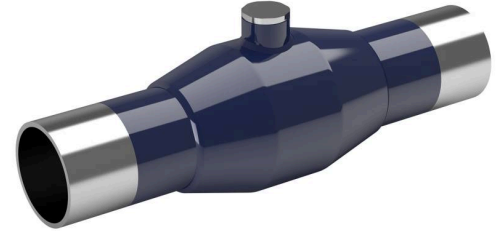


Branching valves, full bore

Branching valve, welding / welding, EN (DIN), DN 20-150, full bore



Body	DN 20-150 Steel, P235GH (1.0345)
Ball	DN 20-150 Stainless steel, X5CrNi18-10 (1.4301)
Ball seal	DN 20-150 PTFE+C
Stem	DN 20-150 Stainless steel, X8CrNiS18-9 (1.4305)
Stem seal	DN 20-150 FPM
Operation	DN 20-150 with socket wrench

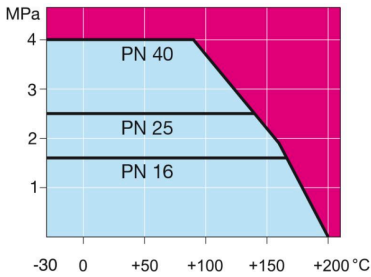


Operation conditions

-30 °C – +200 °C

Below 0 °C contact manufacturer

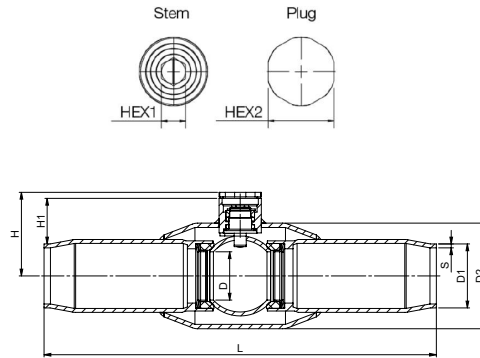
Leakage rate A (EN 12266-1)



Not for steam

DN	PN	Product no. Vexve	D	D1	D2	H	H1	HEX1	HEX2	L	S	kg
20	40	320020	20	26.9	48.3	42	21	9	22	230	2,3	1.1
25	40	320025	25	33.7	60.3	46	20	9	22	260	2,6	1.3
32	40	320032	32	42.4	70.0	55	27	10	27	260	2,6	1.5
40	40	320040	40	48.3	88.9	63	29	10	27	300	2,9	2.4
50	25	320050	50	60.3	101.6	74	30	15	32	300	2,9	3.3
65	25	320065	65	76.1	121.0	87	36	15	32	300	3,2	4.6
80	25	320080	80	88.9	146.0	104	46	15	36	325	3,6	7.2
100	25	320100	100	114.3	177.8	123	47	19	41	325	3,6	15.8
125	25	320125	125	139.7	219.1	143	53	19	41	360	3,6	20.4
150	25	320150	150	168.3	273	175	84	32	70	400	4,5	48

DN 20-80



DN 100-150

